



# Student Planner

## 2017-18

Student \_\_\_\_\_ Grade \_\_\_\_\_

# STUDENT INFORMATION

Name: \_\_\_\_\_ Phone: \_\_\_\_\_

Address: \_\_\_\_\_

Parent/Guardian Name: \_\_\_\_\_ Work Phone: \_\_\_\_\_

## Class Schedule 1<sup>st</sup> Semester

Period	Class	Teacher	Room #	Homework Partner	Phone
A1					
A2					
A3					
A4					
B5					
B6					
B7					
B8					

## 2<sup>nd</sup> Semester

Period	Class	Teacher	Room #	Homework Partner	Phone
A1					
A2					
A3					
A4					
B5					
B6					
B7					
B8					

## Lunch Schedule

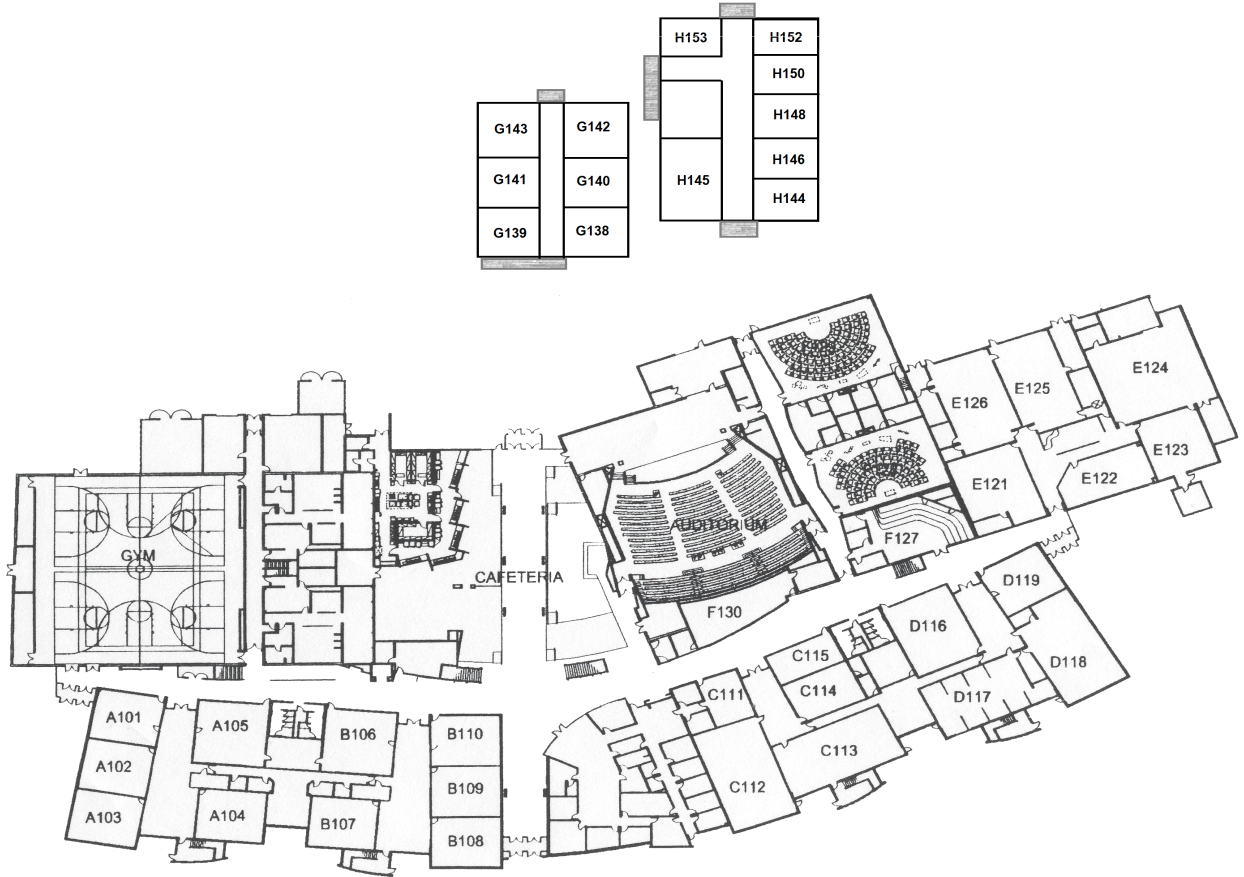
1<sup>st</sup> Semester

2<sup>nd</sup> Semester

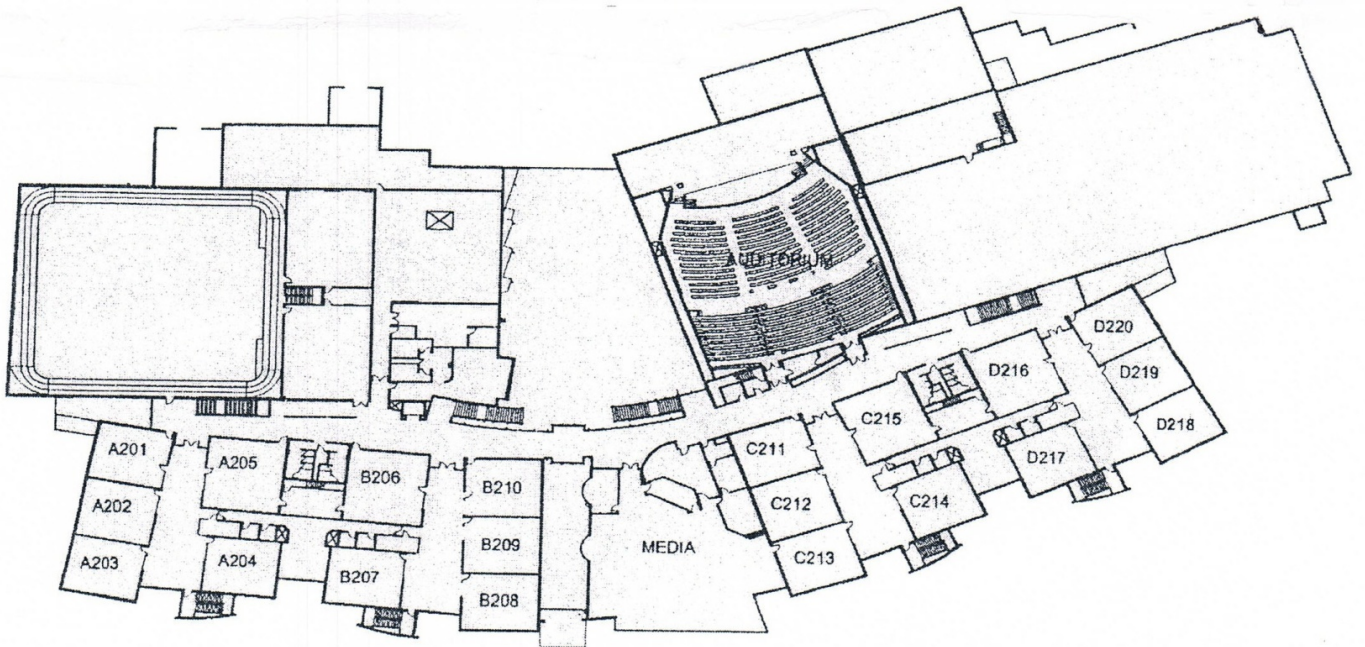
A-Day	B-Day	A-Day	B-Day

# Willowcreek Middle School

## Main Floor



## Second Floor



# Willowcreek Middle School

## Bell Schedules

### 1<sup>st</sup> Lunch

Regular Schedule (Tue, Wed, Thu, Fri)

A1 or B5	8:15-9:30	75 min.
Announcements	9:30-9:35	5 min.
Pride Time	9:40-10:15	35 min.
A2 or B6	10:20-11:35	75 min.
Lunch	11:35-12:05	30 min.
A3 or B7	12:10-1:25	75 min.
A4 or B8	1:30-2:45	75 min.

### 2<sup>nd</sup> Lunch

Regular Schedule (Tue, Wed, Thu, Fri)

A1 or B5	8:20-9:35	75 min.
Announcements	9:30-9:35	5 min.
Pride Time	9:40-10:15	35 min.
A2 or B6	10:20-11:35	75 min.
A3 or B7	11:40-12:55	75 min.
Lunch	12:55-1:25	30 min.
A4 or B8	1:30-2:45	75 min.

### 1<sup>st</sup> Lunch

Monday Early-out

A1 or B5	8:20-9:35	75 min.
Announcements	9:25-9:30	5 min.
A2 or B6	9:35-10:45	70 min.
Lunch	10:45-11:15	30 min.
A3 or B7	11:20-12:30	70 min.
A4 or B8	12:35-1:45	70 min.

### 2<sup>nd</sup> Lunch

Monday Early-out

A1 or B5	8:20-9:35	75 min.
Announcements	9:25-9:30	5 min.
A2 or B6	9:35-10:45	70 min.
A3 or B7	10:50-12:00	70 min.
Lunch	12:00-12:30	30 min.
A4 or B8	12:35-1:45	70 min.



# Assembly Schedule

## 1<sup>st</sup> Assembly

### 1st Lunch

Warning Bell	8:10 a.m	
A1 or B5	8:15-9:27	72 min.
<b>1<sup>st</sup> Assembly</b>	9:32-10:24	52 min.
A2 or B6	10:29-11:41	72 min.
1 <sup>st</sup> Lunch	11:41-12:11	30 min.
A3 or B7	12:16-1:28	72 min.
A-4 or B8	1:33-2:45	72 min.

### 2nd Lunch

Warning Bell	8:10 a.m.	
A1 or B5	8:15-9:27	72 min.
<b>1<sup>ST</sup> Assembly</b>	9:32-10:44	52 min.
A2 or B6	10:49-11:41	72 min.
A3 or B7	11:46-12:58	72 min.
2 <sup>ND</sup> Lunch	12:58-1:28	30 min.
A4 or B8	1:33-2:45	72 min.

## 2<sup>nd</sup> Assembly

### 1st Lunch

Warning Bell	8:10 a.m.	
A1 or B5	8:15-9:27	72 min.
A2 or B6	9:32-10:44	72 min.
<b>2<sup>nd</sup> Assembly</b>	10:49-11:41	52 min.
1 <sup>st</sup> Lunch	11:41-12:11	30 min.
A3 or B7	12:16-1:28	72 min.
A4 or B8	1:33-2:45	72 min.

### 2nd Lunch

Warning Bell	8:10 a.m.	
A1 or B5	8:15-9:27	72 min.
A2 or B6	9:32-10:44	72 min.
<b>2<sup>nd</sup> Assembly</b>	10:49-11:41	52 min.
A3 or B7	11:46-12:58	72 min.
2 <sup>nd</sup> Lunch	12:58-1:28	30 min.
A4 or B8	1:33-2:45	72 min.

## Days School Will Be Closed 2017-2018

<u>Date</u>	<u>Reason</u>
Monday, September 4	Labor Day
Thursday, October 19	Fall Break
Friday, October 20	Fall Break
Monday, October 23	Professional Development
Wednesday, November 22	Teacher Comp. Day
Thursday, November 23	Thanksgiving Break
Friday, November 24	Thanksgiving Break
Wednesday, December 20 (1/2 Day)	Christmas Break
Thursday, December 21-January 2	Christmas Break
Monday, January 15	Martin Luther King, Jr. Day
Monday, February 19	Washington-Lincoln Day
Monday, March 5	Professional Development
Monday, April 2	Snow Make-up Day
Tuesday, April 3	Teacher Comp. Day
Wednesday, April 4-6	Spring Break
Monday, May 28	Memorial Day
Thursday, May 31	Last Day of School

### Dates of Parent-Teacher Conferences

First Term	Thursday, September 14, 2017	3:30 – 7:30
Third Term	Thursday, February 15, 2018	3:30 – 7:30





## ADMINISTRATIVE RESPONSIBILITIES 2017-2018

Mr. Barth	Mr. Broadhead	Mr. Felix
Sc-Z	A-Hi	Ho-Sa
Counseling Department	PE/Health Department	English Department
Office Staff	Science Department	Foreign Lang. Dept.
Performing Arts Dept.	CTE Department	Social Studies Dept.
Math Department	Special Ed. Department	Media Center
Custodial	9th Grade House	Visual Arts Dept.
8th Grade House	Academic Coaches	7th Grade House
Budgets	Aides	504's
Cluster Representative	Athletics	Accreditation
District Hearings	Attendance Policy	Announcements
Evaluations	Building Schedule/Rental	Credit Recovery
Faculty Handbook	Fundraisers/5K	Data Specialist
Faculty Meetings	Guided Studies?	ELL
Fee Waivers	Honor Roll Activities	Inventory
Land Trust Plan	Keys	Mentor Teachers
Leadership Team	Lockers	Parent Communication
Master Schedule	Photography	PBIS Committee
Out of Area	PLC Committee	Pride Time
Principal's Academy	Prof. Development/CTLs	Prof. Development/CTLs
Prof. Development/CTLs	Relicensure	Safety Committee
PTSA	School Calendar	School Safety Plan
Public Relations	Student Handbook	Skyward
SCC	Student/Fac. Recognition	Stakeholder Report
Secretaries	Substitutes	Testing
Student Council	Technology	Textbooks
Student Teachers		Transportation/Busing



# ADMINISTRATION/COUNSELING DIRECTORY 2017-2018

<u>Name</u>	<u>Position</u>	<u>Room</u>	<u>Email Address</u>
Barth, Aaron	Principal	Main Office	abarth@alpinedistrict.org
Felix, Mike	Assistant Principal	Main Office	mjfelix@alpinedistrict.org
Broadhead, John	Assistant Principal	Main Office	johnbroadhead@alpinedistrict.org
Betts, Jennifer	Lead Secretary	Main Office	jbetts@alpinedistrict.org
Hunsaker, DaraLyn	Attendance Secretary	Attendance Office	dhunsaker@alpinedistrict.org
Broadhead, Jill	Financial Secretary	Finance Office	jbroadhead@alpinedistrict.org
Makin, Jody	Registrar	Counseling Office	jmakin@alpinedistrict.org
Larsen, Deanne	Counselor A-Co	Counseling	deannelarsen@alpinedistrict.org
Ben Mallett	Counselor Cr-Hi	Counseling	bmallett@alpinedistrict.org
Davis, Tyler	Counselor Ho-Me	Counseling	tylerdavis@alpinedistrict.org
Powell, LuAnn	Counselor Mi-Sa	Counseling	lpowell@alpinedistrict.org
Rawson, Ray	Counselor Sc-Z	Counseling	rrowson@alpinedistrict.org
Brailsford, Shelly	Media Center Coordinator	Media Center	sbrailsford@alpinedistrict.org



## School Information

School Address:

2275 West 300 North  
Lehi, UT 84043

Telephone Number:

(801)610-8766

Fax Number:

(801)766-5168

Main Office Hours: (School Year)

7:30 a.m. - 3:30 p.m.

Approximate Enrollment:

1800 Students

School Mascot:

Wolverine

School Colors:

Maroon, Black, and Gray



<b>School Handbook Sections</b>	<b>Page</b>
Americans with Disabilities Act	8
Assembly Behavior	8
Attendance Policy	9
Bullying	14-15
Bus Regulations	9
Cafeteria Privileges	9
Cheating	10
Class Changes	10
Closed Campus Policy	10
Dress Code	10
Discipline Policy	10
Electronic Device Policy	10
Emergency Procedures	11
First Aid	11
Help at School	11
Lockers	11
Lunch	11
Plagiarism	11
Report Cards	11
Safe School Policy	11-12
Sexual Harassment Policy	12
Skyward	12
Snow Policy	12
Student Computer Use Agreement	12
Suspension and Expulsion	12
Tobacco, Alcohol, and Drug Policy	12-13
Telephone	13
Willowcreek Middle School Pride	13

## **GENERAL GUIDELINES**

- A. All personal music devices, and/or cellular phones must be turned off and put away (in pocket, backpack, etc.) while in class. These items may be taken away if the policy is not followed. –See Electronic Device Policy
- B. Do not bring nuisance items and/or toys to school. This includes, but is not limited to: toys, balloons, yo-yos, laser pens or pets of any kind. They may be taken away at any time. **The school is not responsible if these items are stolen, lost, or damaged.**
- C. Students may **NOT** sell merchandise at school or on school property.
- D. Students not enrolled at WMS may not attend school as guests.
- E. Energy drinks may not be allowed on campus.
- F. The school administration and/or student council may establish additional rules and guidelines for the benefit of all.
- G. Lost and found items can be found in the office. All lost items will be donated to a charity if not claimed by the end of each term.
- H. All deliveries to students must be made through the main office.

### **AMERICANS WITH DISABILITIES ACT**

No student, classified as disabled under the provisions of the Individuals With Disabilities Education Act (IDEA), or Section 504 of the Rehabilitation Act of 1973, shall be suspended or expelled repeatedly or for any extended period of time under this policy where the misconduct is a manifestation of that student's disability. If you need appropriate accommodations, please contact the principal or the district office.

### **ASSEMBLY BEHAVIOR**

Student behavior while attending assemblies should be similar to the behavior required while in class. Please follow these assembly rules:

1. Move quickly to your seat. Move toward the center of the aisle. Do not save seats. Keep feet off of seats and railing.
2. Be courteous and respectful of those performing. Applaud politely and appropriately.
3. Turn off all cell phones and personal music devices.
4. Do not whistle, shout, cat call or in any other way disrupt the performance.
5. Stay seated until dismissed by the person in charge.
6. No pop, candy, or food of any kind is allowed in the auditorium.

Students who misbehave or do not follow these rules may be escorted out and may lose the privilege to attend future assemblies.

## ATTENDANCE POLICY

### Absence

An unexcused absence is recorded when a student is not present during an entire day or class period. Notification and/or documentation outlining why a student did not attend is required to excuse an absence. Parents/Guardians are requested to call the attendance secretary before 10:00 a.m. if their student is going to be absent. They should be specific when stating the excused reason: illness, doctor, dentist, court, etc. Parent/Guardians are encouraged to pre-excuse absences due to foreseen needs (graduations, vacations, funerals, etc.). All absences must be cleared within 10 days from the day of the absence. A student will be considered truant if he/she is absent from any class without proper permission. Truancy will be considered an unexcused absence.

**4<sup>th</sup> Unexcused Absences**—Students with more than three unexcused absences (12 periods) will be identified by the attendance secretary. Student will meet with an attendance secretary. Parents/Guardians notified and absences are excused as appropriate within the last 10 days. Attendance contract is signed by the student.

**5<sup>th</sup> Unexcused Absence**—Students that accrue five unexcused absences (20 periods) will receive attendance letter #1. Parents/Guardians are notified. Attendance contract is signed by student, parent/guardian, academic coach, and administrator. Subsequent unexcused absences will result in detention and/or additional consequences.

**6<sup>th</sup> Unexcused Absence** (24 periods)—Parent/Guardian is contacted. Student is assigned 30 minutes after-school detention or lunch detention.

**7<sup>th</sup> Unexcused Absence** (28 periods)—Parent/Guardian is contacted. Student is assigned 45 minutes after-school detention or two lunch detentions.

**8<sup>th</sup> & 9<sup>th</sup> Unexcused Absences** (32 & 36 periods)—Student, Parent/Guardian, and Administration meeting. Student is assigned 60 minutes after-school detention or three lunch detentions.

**10<sup>th</sup> Unexcused Absence**—Students that accrue 10 Unexcused Absences (40 periods) will receive Truancy Citation #2 and will be assigned to attend District Truancy School. Failure of the student and parent/guardian to attend truancy school will result in immediate referral to the Fourth District Court on charges of Habitual Truancy.

**11<sup>th</sup>, 12<sup>th</sup>, 13<sup>th</sup>, and 14<sup>th</sup> Unexcused Absences** (44-56 periods)—Student, Parent/Guardian, and Administration meeting. Student is assigned to In-School Suspension (ISS). Team will determine additional interventions such as, but not limited to adjusting class schedule, requiring additional attendance tracking, escorted transportation to school, home visits, formal school hearing, etc.

**15<sup>th</sup> Unexcused Absence**—Students that accrue 15 Unexcused Absences (60 periods) will receive Truancy Citation #3 as a referral to the Fourth District Court on charges of Habitual Truancy. Student, Parent/Guardian, and Administrator may also convene a District Hearing to discuss alternate placement and schooling options.

**\*As per legislation the consequences are subject to change**

### Tardy

Students must be inside their assigned classroom before the tardy bell rings. Students who are tardy will report to the attendance office for an entry slip.

**1<sup>st</sup> Tardy**—Student is warned.

**2<sup>nd</sup> Tardy**—Attendance contract is signed by student.

**3<sup>rd</sup> Tardy**—Parent/Guardian is contacted by the attendance secretary. Attendance contract is sent home to be signed by parent/guardian.

**4<sup>th</sup>, 5<sup>th</sup> & 6<sup>th</sup> Tardy**—Parent/Guardian is contacted. Student is assigned lunch detention.

**7<sup>th</sup> & 8<sup>th</sup> Tardy**—Student is assigned two lunch detentions.

**9<sup>th</sup> Tardy**—Parent/Guardian is contacted. Student is assigned detention(s) until student, parent/guardian, and administration meet to create an attendance plan.

**10 or more Tardies**—Parent/Guardian is contacted. Appropriate consequences may result in but not limited to: In-school suspensions, out-of-school suspension or Saturday school.

### Late Check-in

Students who come to school late must report to the attendance office. Students must have a written excuse or a telephone call from their parent/guardian to be considered a late check-in. The student will receive an entry slip from the attendance office.

### Checking Out

Students who need to leave school during school hours must check out through the attendance office or front office. A parent or guardian must enter the building and sign out the student.

**Please expect a delay in checking out your students during Pride Time (9:40-10:15-Tue, Wed, Thu, Fri).**

### Truancy (Sluff)

A student will be considered truant if he/she is absent from any class without proper permission. Possible consequences may include lunch detention or suspension. Attendance contract is signed by student, parent/guardian, academic coach, and administrator.

### Homework

If a student is absent for at least three consecutive days, you may request homework by calling the main office (801-610-8766). Current grades and assignments can also be monitored by checking Skyward and communicating with individual teachers.

## BUS REGULATIONS

Bus drivers will instruct students concerning bus rules. Generally they are the same as those we expect while students are in school classrooms. Students must be careful to line up orderly behind the sidewalk while waiting to load buses after school. Never approach a moving bus or run along the side of buses as they enter or leave the parking lot. Riding the school bus is a privilege. Improper behavior may result in the privilege being denied.

## CAFETERIA PRIVILEGES

Students should be on their best behavior while in the cafeteria. Those who misbehave, litter, leave trays, cut in line, or annoy others will be asked to clean the cafeteria and/or lose lunchroom privileges.

## **CHEATING**

Students are expected to establish a pattern of individual effort to develop the skills and information necessary to be successful. Students are encouraged to ask for help from teachers, family members, and peers. However, all classwork, homework, projects, tests, and quizzes are to represent individual learning. Cheating or any form of dishonesty in regards to schoolwork can result in complete loss of credit, suspension, and/or required additional work. Parents will be notified anytime dishonesty is apparent.

## **CLASS SCHEDULING CHANGE**

Class changes are strongly discouraged. In the event a class change is necessary, you may request a class change through the counseling webpage. There is a \$5 class-scheduling fee. The completed form (including parent signature) and the \$5 fee will need to be turned in at the time of the class change. Class changes will only be made upon availability. School fees must be paid before a class change will be made. Class changes may only occur within the first two weeks of each term.

## **CLOSED CAMPUS POLICY**

Willowcreek is a closed-campus school. For a student to leave campus, he/she must be checked out in the office by a parent or guardian.

## **DRESS CODE**

As fads and extremes of dress and appearance tend to attract improper attention to the individual and sometimes interfere with the educational process, the Alpine School District Board of Education requires all of its students to conform to standards that avoid extremes and that exemplify personal cleanliness. Any personal appearance in either clothing style or personal grooming is prohibited if:

1. It begins to cause a material and substantial disruption of the educational process in the school.
2. It endangers the health, safety, or welfare of the individual or other students.
3. It does not conform to generally accepted school standards or calls undue attention to the anatomical details of the individual.
4. It does not conform to the requirements of a special class or activity approved by the principal, which requires special dress or grooming in which the student expects to participate.
5. It appears as an obvious attempt to challenge the intent and scope of the policy of the authority of the school in its reasonable interpretation and enforcement.

This policy applies to all school-related functions, except those special activities approved by the administration. Nothing in this policy is intended to intrude on the constitutional or statutory rights of any student, as long as, in an exercise of these rights, students do not create a threat to the good order of the school or cause the disruption of any recognized school function. The exercise of such rights by students must be consistent with the public purpose for which public schools have been established.

### **Personal Hygiene**

- Students should be clean and well groomed.

### **Clothing**

- All students are required to wear footwear to school. Slippers are not acceptable footwear for students at school.
- Skirts and shorts must be closer to the knee than the hip.

- Hats and other head coverings may not be worn in the building during school hours unless worn along with an approved school activity.
- Sunglasses can not be worn inside the school.
- Halters, tank tops, and bare midriffs are not acceptable.
- Vulgar words, profane or obscene slogans, pictures or advertisements of alcohol, tobacco, and/or drugs, or those that promote violence or sexual harassment on clothing are not acceptable.
- Bandanas, dangling belts, florescent tape, chains, and other marking mimicking groups/gangs are prohibited.
- Jeans, shorts, and pants must be above the hip covering all underclothing. Jeans and pants may not be worn that have holes above the thigh midline.
- Shirts and blouses must have sleeves that cover shoulders, under arms, all undergarments, and cleavage even through mesh or sheer fabric.

Adherence to these dress and grooming standards is the responsibility of the student and his/her parent or guardian. Failure to conform may involve sending students home to change, wear alternative clothing provided by the school, dismissal from school, or restriction from participation in a school activity.

## **DISCIPLINE POLICY**

We are proud of the students who attend our school. It is our goal to promote a positive educational experience for all our students. We believe in giving students the freedom to make choices, but the consequences for their choices are determined by school policy. We reward good behavior.

## **ELECTRONIC DEVICE POLICY**

Alpine School District Policy No. 5250 states, "in some instances the possession and use of electronic communication devices may be appropriate; however, often these devices or objects have the effect of distracting, disrupting and intimidating others in a school setting." Students may carry electronic communication devices (cell phones). However teachers reserve the right to create and manage classroom electronic device policies. "The use of an interfering device or electronic communication device to threaten, intimidate or embarrass another or to capture and transmit test information or any other information in a manner constituting fraud, theft or academic dishonesty, will result in suspension."

- If any electronic device becomes distracting, disruptive or is used to intimidate others at our school, it will be confiscated and the student will be subject to school discipline.
- If any electronic device is confiscated and brought to the office, the following steps can be taken but are left to administrative discretion according to the offense and the severity of use;  
1<sup>st</sup> Offense—phone call home, item returned at the end of the day to the student  
2<sup>nd</sup> Offense—Electronic device non-use contract signed, item released to a parent/guardian  
3<sup>rd</sup> Offense—student subject to school discipline, item confiscated until an administrative conference is held with the parent(s)/guardian(s), student, and teacher when applicable.
- The school shall not assume responsibility for theft, loss, or damage of a cell phone, I-pod, or any other electronic communication or interfering device or unauthorized calls made on a cell phone while it is in the student's possession (person, locker, backpack, etc).

## **EMERGENCY PROCEDURES**

### **Fire**

Fire alarms will sound and the students will evacuate the building according to the established plan rehearsed in each classroom. If students are at lunch or on a class break, they should report to their A-1 teacher evacuation location

### **Earthquake**

A. Students will “drop” and assume the “duck and cover” position under a desk or table, if possible, to enhance protection.

B. Students should move away from any windows and out from under any heavy light fixtures.

C. Students will evacuate the building with their teacher when the appropriate alarm sounds. When the situation is safe, and teachers and students are directed to do so, the bell will sound for teachers and students to re-enter the building.

### **Intruder**

A. Each teacher will lock down his/her room with students inside and against the wall out of the view of windows.

B. Students in the halls at the time of intrusion will go to the nearest room and follow directions; students in the bathroom will stay there and be quiet.

## **FIRST AID**

We are only authorized to administer first aid of a very simple type at school. We are not permitted to change any dressing on existing injuries, wrap sprains, or administer medication of any kind. Tylenol® or Acetaminophen is available only after a phone call from a parent or guardian. All medication may only be distributed through the school nurse and the main office.

## **HELP AT SCHOOL**

### **Trouble in a Class**

Students need speak with a teacher first. Find a time when the teacher is not busy (before or after school, between classes). If parents would like to meet with a teacher, they can call the main office and make an appointment. Group meetings can be arranged before or after school with enough notice.

### **Sickness**

Ask your teacher for a pass to the office. Explain your condition and call for a parent or guardian to come and check you out.

## **LOCKERS**

Each student may purchase a locker. At that point, the student is assigned a school locker for which he/she is responsible. 7<sup>th</sup> and 8<sup>th</sup> grade students may be assigned a locker partner if needed. The combinations are strictly private information and should not be shared with anyone. The lockers are property of the school and may be searched at any time for any reason. It is suggested that all valuables be left at home and not stored in lockers.

### **Locker Guidelines**

1. **Do not give out your locker combination to anyone.**
2. Do not write on the inside or outside of the lockers.
3. Profanity, pictures not in good taste, or advertisements of alcohol, tobacco, or drugs are not permitted on the inside or outside of lockers.
4. Lockers that do not function properly or are defaced should be reported to the office immediately.
5. Lockers should never be left unlocked.
6. Do not to bring valuables to school. Money should not be left in lockers.

## **LUNCHES**

You can purchase breakfast/lunch online at [www.mealpayPlus.com](http://www.mealpayPlus.com) or use cash or check to purchase a meal plan before school in the cafeteria.

## **PLAGIARISM**

Our school values academic integrity and does not condone any form of dishonesty, deception, or plagiarism of any kind, including academic dishonesty – when individuals or groups take credit for work that is not completely theirs.

Plagiarism of someone else’s work violates class and school integrity. Plagiarism includes ANY copying of someone else’s work, not only written assignments, problems, research papers, books, articles, websites, captions, textbooks, speeches, handouts, charts, and diagrams, but also art, graphics, computer programs, music and videos/DVD material.

Unfortunately, it is common to disguise academic dishonesty, using terms such as copying, sharing, and borrowing to dismiss the seriousness of this offense. Passing off someone else’s work as your own is a form of stealing. Students are expected to do their own work at all times.

## **REPORT CARDS**

Report cards and other grade updates can be found by logging in to your Skyward account.

### **Academic Grades**

A - Excellent work or outstanding accomplishments

B - Good work, above average

C - Fair or average work, achieving on par with most

D - Poor work, not as successful as most

F - Failing and loss of credit

I – In Progress/Incomplete, one or more Walk Away(s) not yet completed.

### **Citizenship Grade**

O - Outstanding

S - Satisfactory

N - Needs improvement

U - Unsatisfactory

## **SAFE SCHOOL POLICY**

The Alpine School District Safe Schools Policy prohibits disruptive acts, dangerous weapons, hazing/harassment, abetting, gangs, secret societies and hate groups, and other prohibitive acts defined and described in the following rules and regulations:

### **Disruptive Acts**

Acts that disrupt the daily operation of the school include, but are not limited to: physical or sexual assault, intimidation, aggression, possessing or displaying a dangerous weapon.

### **Dangerous Weapons**

Any item capable of causing serious injury or death to individuals or groups. Any facsimile or representation of a dangerous item. Dangerous weapons include, but are not limited to: firearms, knives, incendiary devices, metal knuckles, straight razors, explosives, poisons, drugs, and noxious, irritating or poisonous gases.

### **Hazing/Harassment/Bullying/Teasing**

Intimidation, in any variety, of a student or staff member is not acceptable. Also, any act that injures, degrades, or disgraces another individual or group will not be tolerated.

**Abetting**

The act of supporting, encouraging, and/or assisting activities that violate the safe school policy.

**Gambling**

Gambling, games of risk, etc., are not permitted on school property.

**Gangs/Secret Societies/Hate Groups**

A group of two or more people who form an allegiance and engage in a range of disruptive behaviors that may include violent or unlawful activity or which advocate hatred or discrimination on the basis of race, religion, sex, national origin or disability.

Students may not:

1. Solicit others to membership of a gang, group or secret society.
2. Request persons to pay for protection or otherwise intimidate or threaten another person.
3. Commit illegal acts or other violations of school district policies.
4. Incite other students to act with physical violence upon another person.
5. Deface school property (i.e., books, lockers, walls, etc.)

**SEXUAL HARASSMENT POLICY**

District policy prohibits sexual harassment of any nature. This includes adult to student, student to adult, and student-to-student. Sexual harassment is defined as unwanted conduct or communication of a sexual nature that adversely affects a person's educational opportunities, relationships or environment.

Inappropriate behavior would include, but is not limited to:

1. Sex role stereotyping that is demeaning and involves unequal treatment of an individual on the basis of that person's gender.
2. Gender abuse, either verbal or visual. This includes the display of demeaning posters, cartoons, nudity, or offensive sexual jokes about gender.
3. Visual or verbal expressions about an individual or name calling that are sexual in nature.
4. Criminal touching or actions not involving touching that are offensive to the extent that they visually or emotionally shock the conscience of a reasonable person.
5. Any unwelcome sexual behavior initiated by an employee, student, a volunteer, or a non-employee.
6. Clothing that shows profanity, vulgarity, or anything of a sexual nature is unacceptable.

Students who have been sexually harassed by an adult or another student should file a complaint with a school counselor or administrator.

**SKYWARD**

Parent(s) and/or Guardian(s) are encouraged to use Skyward during the school year to keep you informed of your student(s) progress. Skyward can be accessed by internet from the school website: [www.willowcreek.alpinedistrict.org](http://www.willowcreek.alpinedistrict.org). You will need to know your student's ID and password. You can access updated assignments, attendance and grades.

**SNOW POLICY**

Snowball throwing is **NOT** allowed anywhere on school campus. Do not bring snow into the building.

**STUDENT COMPUTER USE AGREEMENT**

Computer use will be a valuable resource while at Willowcreek Middle School. However, computers can also be hazardous if used improperly. Student computer use will be available at school

as long as the privilege is used appropriately. Students should be very careful not to disclose any personal information while on the internet or using school e-mail accounts. Students should not attempt to enter any system, program, or computer without proper authorization. Also, students should not plagiarize works or violate copyright or trademark laws. Students should not use the school computer system to access material that is obscene, pornographic, sexually explicit, sexually suggestive, harmful, or inappropriate in any way. If a student inadvertently accesses inappropriate sites or information, quickly report the incident to the teacher. At the beginning of each school year, students and their parents/guardians will sign an Alpine School District Student Computer Use Agreement.

**SUSPENSION AND EXPULSION**

Students will be held responsible for their actions and will conduct themselves according to the rules of the school, showing regard for established authority and the rights and welfare of others. Any unlawful act taking place on school property not only makes the student subject to the penalties that the court prescribes, but also may result in the suspension or expulsion from school. Students may be suspended or referred to a district hearing for possible expulsion by the administration. The following are possible, but not limited to, causes for suspension or expulsion:

1. Willful gross misconduct.
2. Writing or using profane and obscene language or possessing obscene materials on or around school property or at school sponsored activities.
3. The use or possession of tobacco, alcohol, or other narcotics on the school premises or at school-sponsored activities. The students involved will be referred to the police.
4. Truancy (absence from school or a class without appropriate school permission).
5. Vandalism: Anyone found responsible for destroying or damaging school property are required to reimburse the school for the cost of replacing or repairing the damages. Vandalism is a crime. Students will be referred to the police.
6. Any violation of the Safe-School Policy.
7. Fighting (both parties involved).
8. Theft.
9. Violation of Sexual Harassment policy.
10. Public displays of affection (PDA). Excessive physical contact between two students.

The student who was suspended will be responsible for obtaining and making up all assignments missed during the suspension. Teachers will make available all make-up work following a suspension.

**TOBACCO, ALCOHOL, AND DRUG POLICY**

Alpine School District prohibits any unauthorized student use, possession, sale or distribution of alcohol, controlled substances, imitation controlled substances, and/or other similarly harmful substances, or drug paraphernalia. These actions are prohibited in any school building, or on any other property owned or operated by the Board of Education, or at any school-sponsored activity, or in any vehicle dispatched by the District to transport students to or from a school-sponsored activity.

Willowcreek Middle School is a "Drug-Free Zone." This means that these rules not only apply to the school campus, but that they are enforced up to 1,000 feet off campus as well. These rules will also apply whether or not the actions occur during regular school hours. Any student violation of the Drug and Alcohol Policy shall be subject to the following actions:

- Suspension from school for up to 10 days
- Referral to local police department
- Referral to Alpine School District PRI Program

A second or subsequent offense will involve a referral to an administrative hearing panel for possible expulsion. Additionally, students distributing or selling drugs or alcohol will appear at an administrative hearing panel for the first offense for possible expulsion. Any disciplinary action will follow the Alpine School District's due process procedures for students.

**\*\*As per legislation and board of education this rule may change\*\***

#### **TELEPHONE**

Students may use the telephone provided in the main office before or after school, during lunch, or with a hall pass from their teacher

#### **WILLOWCREEK MIDDLE SCHOOL PRIDE**

Besides involvement in academics, athletics, school activities and school government, there are several ways by which students' success and accomplishments will be recognized at Willowcreek:

1. Student of the Week.
2. Honor Roll and Honor Roll Activities
3. Department Awards for outstanding students.



# BULLYING

Our goal at Willowcreek Middle School is to “Balance the Power”



## Be an Upstander

The purpose of this section is to provide points of discussion for parents & teachers with their students. One common theme in all bullying cases is a perceived imbalance of power, which allows one student, or group of students to feel superior to and then victimize others.

### **Definition of Bullying:**

A deliberate, mean-spirited action intended to cause emotional or physical harm.

The National School Safety Center has identified several types of bullying, which involve DIRECT action such as physical contact or INDIRECT action such as verbal, emotional, sexual or passive-aggressive harassment.

### **Direct & physical bullying**

Includes punching, poking, strangling, pinching, shoving, hitting, biting, spitting, hair pulling, ganging up on, excessive tickling and theft.

### **Verbal bullying**

Includes such acts as derogatory racial terms, name calling, put-downs, insults, verbal threats, cruel jokes, or demands for money or property.

### **Emotional bullying**

Includes rejecting, terrorizing, defaming, humiliating, blackmailing, rating or ranking a person and/or his or her characteristics, manipulating friendships, playing mean or embarrassing tricks, peer pressure, insulting hateful graffiti, hateful looks, indecent gestures, and ostracizing on the basis of social status.

### **Sexual bullying**

Can include many of the actions listed above, as well as exhibitionism, sexual propositioning, sexual harassment, and abuse involving inappropriate touching and physical contact.

### **Hate-motivated bullying**

Hate-motivated bullying can legally constitute a hate crime. Behavior can include taunting about race, religion, and physical or mental disabilities.

### **Cyber-Bullying**

Includes many of the actions listed above, but in electronic form such as text messaging, emails, on-line chats, etc.

Statistics from a study on bullying at schools by Flynt Morton & McKinley (2004) reveal, “About 15% of school absenteeism is attributed to fearful victims avoiding bullies.”

How to tell if your child is being bullied:

- Lack of confidence.
- Not wanting to go to school.
- Not wanting to ride the bus or trying to find a different route to walk to school.
- Not wanting to talk about the school day.
- Unexplained crying
- Drop in performance.
- Change in behavior, becoming more violent, withdrawn, or defensive.
- Talking often about someone who is “bugging me.”

What to tell your child *to do* if he/she is being bullied:

- Be assertive.
- Make eye contact.
- Firmly tell the bully to stop.
- Quickly get away from the situation.
- Immediately talk to a trusted adult.
- Have confidence in who you are.
- Make good friends and stick together.

What to tell your child *not to do* if he/she sees someone being bullied:

- Do not use violence against the bullies.
- Do not tell the student being bullied to deal with the problem on his or her own. Help student contact an adult.

What you can tell your child if he/she feels someone is being bullied:

- Encourage the student being bullied to talk about what is happening.
- Persuade the student to talk to an adult. This person may be a teacher, parent or other trusted adult.

What to do if your child is being bullied:

Step 1. Talk to your child

- Talk calmly and help him/her understand there are things that can be done to try to stop the bullying.
- Note what he/she says - how, how often, where, and what.
- Reassure your child that he/she did the right thing by telling you.
- Explain that if there is another incident he/she should immediately report it to a teacher and also tell you.

Step 2. Talk to a class teacher or school administrator.

- Make an appointment.
- Explain the situation.
- Be realistic- the school will not be able or willing to exclude the bully from the class or school without evidence of bullying; however, the teacher/administrator should investigate the allegations and take reasonable steps to protect your child.

“Nearly 60 % of boys who were classified as bullies in grades 6 through 9 were convicted of at least one crime by the age of 24.”(Selekman & Vessey, 2004)

**What to do...If your child is bullying others:**

- Make it clear that you will not tolerate bullying and that there will be consequences if it continues.
- Find out why your child is bullying.
- Discuss with your child how it must feel to be the victim.
- Reward the positive actions and emphasize the good qualities of your child.
- Encourage your child to get involved in positive activities that match his/her interests.

**Willowcreek Middle School is trying to “BALANCE THE POWER” by doing the following:**

- Willowcreek Middle School has modified the student discipline guide to include bullying.
- Students are encouraged to report bullying. The incident will be recorded and follow-up will be documented.
- Students will get help to understand their behavior, what to do about it, and will be disciplined.
- Students who are bullied will learn how to handle a bully and will be encouraged to report it immediately.

**How to stop a bully:**

- Be assertive.
- Make eye contact.
- Firmly tell the bully to stop.
- Quickly get away from the situation.
- Immediately talk to a trusted adult.
- Have confidence in who you are.
- Make good friends and stick together.

**What students should not do if they see someone being bullied:**

- **Do not** use violence against the bullies.
- **Do not** tell the student being bullied to deal with the problem on his/her own. Help student contact an adult.
- **Do not** try and deal with the situation alone, find an adult

“By not intervening when bullying is observed, we are passively saying that this is okay behavior.”

For more information contact:  
Willowcreek Middle School  
2275 West 300 North  
Lehi, UT 84043  
(801) 766-5273

## Monday, August 21, 2017 (A/B Day) 7th Grade Day

Period	Subject	Assignments	Due Date	Complete (X)	Teacher Comment	Teacher Initials
Parent Comments/Signature:						

## Tuesday, August 22, 2017 (A Day)

Period	Subject	Assignments	Due Date	Complete (X)	Teacher Comment	Teacher Initials
<b>A1</b>						
<b>A2</b>						
<b>A3</b>						
<b>A4</b>						
Parent Comments/Signature:						

## Wednesday, August 23, 2017 (B Day)

Period	Subject	Assignments	Due Date	Complete (X)	Teacher Comment	Teacher Initials
<b>B5</b>						
<b>B6</b>						
<b>B7</b>						
<b>B8</b>						
Parent Comments/Signature:						

## Thursday, August 24, 2017 (A Day)

Period	Subject	Assignments	Due Date	Complete (X)	Teacher Comment	Teacher Initials
<b>A1</b>						
<b>A2</b>						
<b>A3</b>						
<b>A4</b>						
Parent Comments/Signature:						

## Friday, August 25, 2017 (B Day)

Period	Subject	Assignments	Due Date	Complete (X)	Teacher Comment	Teacher Initials
<b>B5</b>						
<b>B6</b>						
<b>B7</b>						
<b>B8</b>						
Parent Comments/Signature:						

## Monday, August 28, 2017 (A Day)

Period	Subject	Assignments	Due Date	Complete (X)	Teacher Comment	Teacher Initials
<b>A1</b>						
<b>A2</b>						
<b>A3</b>						
<b>A4</b>						
Parent Comments/Signature:						

## Tuesday, August 29, 2017 (B Day)

Period	Subject	Assignments	Due Date	Complete (X)	Teacher Comment	Teacher Initials
<b>B5</b>						
<b>B6</b>						
<b>B7</b>						
<b>B8</b>						
Parent Comments/Signature:						

## Wednesday, August 30, 2017 (A Day)

Period	Subject	Assignments	Due Date	Complete (X)	Teacher Comment	Teacher Initials
<b>A1</b>						
<b>A2</b>						
<b>A3</b>						
<b>A4</b>						
Parent Comments/Signature:						

## Thursday, August 31, 2017 (B Day)

Period	Subject	Assignments	Due Date	Complete (X)	Teacher Comment	Teacher Initials
<b>B5</b>						
<b>B6</b>						
<b>B7</b>						
<b>B8</b>						
Parent Comments/Signature:						

## Friday, September 1, 2017 (A Day)

Period	Subject	Assignments	Due Date	Complete (X)	Teacher Comment	Teacher Initials
<b>A1</b>						
<b>A2</b>						
<b>A3</b>						
<b>A4</b>						
Parent Comments/Signature:						



## Monday, September 4, 2017 Labor Day (No School)

Period	Subject	Assignments	Due Date	Complete (X)	Teacher Comment	Teacher Initials
Parent Comments/Signature:						

## Tuesday, September 5, 2017 (B Day)

Period	Subject	Assignments	Due Date	Complete (X)	Teacher Comment	Teacher Initials
<b>B5</b>						
<b>B6</b>						
<b>B7</b>						
<b>B8</b>						
Parent Comments/Signature:						

## Wednesday, September 6, 2017 (A Day)

Period	Subject	Assignments	Due Date	Complete (X)	Teacher Comment	Teacher Initials
<b>A1</b>						
<b>A2</b>						
<b>A3</b>						
<b>A4</b>						
Parent Comments/Signature:						

## Thursday, September 7, 2017 (B Day)

Period	Subject	Assignments	Due Date	Complete (X)	Teacher Comment	Teacher Initials
<b>B5</b>						
<b>B6</b>						
<b>B7</b>						
<b>B8</b>						
Parent Comments/Signature:						

## Friday, September 8, 2017 (A Day)

Period	Subject	Assignments	Due Date	Complete (X)	Teacher Comment	Teacher Initials
<b>A1</b>						
<b>A2</b>						
<b>A3</b>						
<b>A4</b>						
Parent Comments/Signature:						

## Monday, September 11, 2017 (B Day)

Period	Subject	Assignments	Due Date	Complete (X)	Teacher Comment	Teacher Initials
<b>B5</b>						
<b>B6</b>						
<b>B7</b>						
<b>B8</b>						
Parent Comments/Signature:						

## Tuesday, September 12, 2017 (A Day)

Period	Subject	Assignments	Due Date	Complete (X)	Teacher Comment	Teacher Initials
<b>A1</b>						
<b>A2</b>						
<b>A3</b>						
<b>A4</b>						
Parent Comments/Signature:						

## Wednesday, September 13, 2017 (B Day)

Period	Subject	Assignments	Due Date	Complete (X)	Teacher Comment	Teacher Initials
<b>B5</b>						
<b>B6</b>						
<b>B7</b>						
<b>B8</b>						
Parent Comments/Signature:						

## Thursday, September 14, 2017 (A Day)

Period	Subject	Assignments	Due Date	Complete (X)	Teacher Comment	Teacher Initials
<b>A1</b>						
<b>A2</b>						
<b>A3</b>						
<b>A4</b>						
Parent Comments/Signature:						

## Friday, September 15, 2017 (B Day)

Period	Subject	Assignments	Due Date	Complete (X)	Teacher Comment	Teacher Initials
<b>B5</b>						
<b>B6</b>						
<b>B7</b>						
<b>B8</b>						
Parent Comments/Signature:						

## Monday, September 18, 2017 (A Day)

Period	Subject	Assignments	Due Date	Complete (X)	Teacher Comment	Teacher Initials
<b>A1</b>						
<b>A2</b>						
<b>A3</b>						
<b>A4</b>						
Parent Comments/Signature:						

## Tuesday, September 19, 2017 (B Day)

Period	Subject	Assignments	Due Date	Complete (X)	Teacher Comment	Teacher Initials
<b>B5</b>						
<b>B6</b>						
<b>B7</b>						
<b>B8</b>						
Parent Comments/Signature:						

## Wednesday, September 20, 2017 (A Day)

Period	Subject	Assignments	Due Date	Complete (X)	Teacher Comment	Teacher Initials
<b>A1</b>						
<b>A2</b>						
<b>A3</b>						
<b>A4</b>						
Parent Comments/Signature:						

## Thursday, September 21, 2017 (B Day)

Period	Subject	Assignments	Due Date	Complete (X)	Teacher Comment	Teacher Initials
<b>B5</b>						
<b>B6</b>						
<b>B7</b>						
<b>B8</b>						
Parent Comments/Signature:						

## Friday, September 22, 2017 (A Day)

Period	Subject	Assignments	Due Date	Complete (X)	Teacher Comment	Teacher Initials
<b>A1</b>						
<b>A2</b>						
<b>A3</b>						
<b>A4</b>						
Parent Comments/Signature:						



## Monday, September 25, 2017 (B Day)

Period	Subject	Assignments	Due Date	Complete (X)	Teacher Comment	Teacher Initials
<b>B5</b>						
<b>B6</b>						
<b>B7</b>						
<b>B8</b>						
Parent Comments/Signature:						

## Tuesday, September 26, 2017 (A Day)

Period	Subject	Assignments	Due Date	Complete (X)	Teacher Comment	Teacher Initials
<b>A1</b>						
<b>A2</b>						
<b>A3</b>						
<b>A4</b>						
Parent Comments/Signature:						

## Wednesday, September 27, 2017 (B Day)

Period	Subject	Assignments	Due Date	Complete (X)	Teacher Comment	Teacher Initials
<b>B5</b>						
<b>B6</b>						
<b>B7</b>						
<b>B8</b>						
Parent Comments/Signature:						

## Thursday, September 28, 2017 (A Day)

Period	Subject	Assignments	Due Date	Complete (X)	Teacher Comment	Teacher Initials
<b>A1</b>						
<b>A2</b>						
<b>A3</b>						
<b>A4</b>						
Parent Comments/Signature:						

## Friday, September 29, 2017 (B Day)

Period	Subject	Assignments	Due Date	Complete (X)	Teacher Comment	Teacher Initials
<b>B5</b>						
<b>B6</b>						
<b>B7</b>						
<b>B8</b>						
Parent Comments/Signature:						

## Monday, October 2, 2017 (A Day)

Period	Subject	Assignments	Due Date	Complete (X)	Teacher Comment	Teacher Initials
<b>A1</b>						
<b>A2</b>						
<b>A3</b>						
<b>A4</b>						
Parent Comments/Signature:						

## Tuesday, October 3, 2017 (B Day)

Period	Subject	Assignments	Due Date	Complete (X)	Teacher Comment	Teacher Initials
<b>B5</b>						
<b>B6</b>						
<b>B7</b>						
<b>B8</b>						
Parent Comments/Signature:						

## Wednesday, October 4, 2017 (A Day)

Period	Subject	Assignments	Due Date	Complete (X)	Teacher Comment	Teacher Initials
<b>A1</b>						
<b>A2</b>						
<b>A3</b>						
<b>A4</b>						
Parent Comments/Signature:						

## Thursday, October 5, 2017 (B Day)

Period	Subject	Assignments	Due Date	Complete (X)	Teacher Comment	Teacher Initials
<b>B5</b>						
<b>B6</b>						
<b>B7</b>						
<b>B8</b>						
Parent Comments/Signature:						

## Friday, October 6, 2017 (A Day)

Period	Subject	Assignments	Due Date	Complete (X)	Teacher Comment	Teacher Initials
<b>A1</b>						
<b>A2</b>						
<b>A3</b>						
<b>A4</b>						
Parent Comments/Signature:						

## Monday, October 9, 2017 (B Day)

Period	Subject	Assignments	Due Date	Complete (X)	Teacher Comment	Teacher Initials
<b>B5</b>						
<b>B6</b>						
<b>B7</b>						
<b>B8</b>						
Parent Comments/Signature:						

## Tuesday, October 10, 2017 (A Day)

Period	Subject	Assignments	Due Date	Complete (X)	Teacher Comment	Teacher Initials
<b>A1</b>						
<b>A2</b>						
<b>A3</b>						
<b>A4</b>						
Parent Comments/Signature:						

## Wednesday, October 11, 2017 (B Day)

Period	Subject	Assignments	Due Date	Complete (X)	Teacher Comment	Teacher Initials
<b>B5</b>						
<b>B6</b>						
<b>B7</b>						
<b>B8</b>						
Parent Comments/Signature:						

## Thursday, October 12, 2017 (A Day)

Period	Subject	Assignments	Due Date	Complete (X)	Teacher Comment	Teacher Initials
<b>A1</b>						
<b>A2</b>						
<b>A3</b>						
<b>A4</b>						
Parent Comments/Signature:						

## Friday, October 13, 2017 (B Day)

Period	Subject	Assignments	Due Date	Complete (X)	Teacher Comment	Teacher Initials
<b>B5</b>						
<b>B6</b>						
<b>B7</b>						
<b>B8</b>						
Parent Comments/Signature:						

## Monday, October 16, 2017 (A Day)

Period	Subject	Assignments	Due Date	Complete (X)	Teacher Comment	Teacher Initials
<b>A1</b>						
<b>A2</b>						
<b>A3</b>						
<b>A4</b>						
Parent Comments/Signature:						

## Tuesday, October 17, 2017 (B Day)

Period	Subject	Assignments	Due Date	Complete (X)	Teacher Comment	Teacher Initials
<b>B5</b>						
<b>B6</b>						
<b>B7</b>						
<b>B8</b>						
Parent Comments/Signature:						

## Wednesday, October 18, 2017 (A Day) Term 1 Ends

Period	Subject	Assignments	Due Date	Complete (X)	Teacher Comment	Teacher Initials
<b>A1</b>						
<b>A2</b>						
<b>A3</b>						
<b>A4</b>						
Parent Comments/Signature:						

## Thursday, October 19, 2017 Fall Break (No School)

Period	Subject	Assignments	Due Date	Complete (X)	Teacher Comment	Teacher Initials
Parent Comments/Signature:						

## Friday, October 20, 2017 Fall Break (No School)

Period	Subject	Assignments	Due Date	Complete (X)	Teacher Comment	Teacher Initials
Parent Comments/Signature:						



## Monday, October 23, 2017 Professional Development (No School)

Period	Subject	Assignments	Due Date	Complete (X)	Teacher Comment	Teacher Initials
Parent Comments/Signature:						

## Tuesday, October 24, 2017 (B Day) Term 2 Starts

Period	Subject	Assignments	Due Date	Complete (X)	Teacher Comment	Teacher Initials
<b>B5</b>						
<b>B6</b>						
<b>B7</b>						
<b>B8</b>						
Parent Comments/Signature:						

## Wednesday, October 25, 2017 (A Day)

Period	Subject	Assignments	Due Date	Complete (X)	Teacher Comment	Teacher Initials
<b>A1</b>						
<b>A2</b>						
<b>A3</b>						
<b>A4</b>						
Parent Comments/Signature:						

## Thursday, October 26, 2017 (B Day)

Period	Subject	Assignments	Due Date	Complete (X)	Teacher Comment	Teacher Initials
<b>B5</b>						
<b>B6</b>						
<b>B7</b>						
<b>B8</b>						
Parent Comments/Signature:						

## Friday, October 27, 2017 (A Day)

Period	Subject	Assignments	Due Date	Complete (X)	Teacher Comment	Teacher Initials
<b>A1</b>						
<b>A2</b>						
<b>A3</b>						
<b>A4</b>						
Parent Comments/Signature:						

## Monday, October 30, 2017 (B Day)

Period	Subject	Assignments	Due Date	Complete (X)	Teacher Comment	Teacher Initials
<b>B5</b>						
<b>B6</b>						
<b>B7</b>						
<b>B8</b>						
Parent Comments/Signature:						

## Tuesday, October 31, 2017 (A Day)

Period	Subject	Assignments	Due Date	Complete (X)	Teacher Comment	Teacher Initials
<b>A1</b>						
<b>A2</b>						
<b>A3</b>						
<b>A4</b>						
Parent Comments/Signature:						

## Wednesday, November 1, 2017 (B Day)

Period	Subject	Assignments	Due Date	Complete (X)	Teacher Comment	Teacher Initials
<b>B5</b>						
<b>B6</b>						
<b>B7</b>						
<b>B8</b>						
Parent Comments/Signature:						

## Thursday, November 2, 2017 (A Day)

Period	Subject	Assignments	Due Date	Complete (X)	Teacher Comment	Teacher Initials
<b>A1</b>						
<b>A2</b>						
<b>A3</b>						
<b>A4</b>						
Parent Comments/Signature:						

## Friday, November 3, 2017 (B Day)

Period	Subject	Assignments	Due Date	Complete (X)	Teacher Comment	Teacher Initials
<b>B5</b>						
<b>B6</b>						
<b>B7</b>						
<b>B8</b>						
Parent Comments/Signature:						

## Monday, November 6, 2017 (A Day)

Period	Subject	Assignments	Due Date	Complete (X)	Teacher Comment	Teacher Initials
<b>A1</b>						
<b>A2</b>						
<b>A3</b>						
<b>A4</b>						
Parent Comments/Signature:						

## Tuesday, November 7, 2017 (B Day)

Period	Subject	Assignments	Due Date	Complete (X)	Teacher Comment	Teacher Initials
<b>B5</b>						
<b>B6</b>						
<b>B7</b>						
<b>B8</b>						
Parent Comments/Signature:						

## Wednesday, November 8, 2017 (A Day)

Period	Subject	Assignments	Due Date	Complete (X)	Teacher Comment	Teacher Initials
<b>A1</b>						
<b>A2</b>						
<b>A3</b>						
<b>A4</b>						
Parent Comments/Signature:						

## Thursday, November 9, 2017 (B Day)

Period	Subject	Assignments	Due Date	Complete (X)	Teacher Comment	Teacher Initials
<b>B5</b>						
<b>B6</b>						
<b>B7</b>						
<b>B8</b>						
Parent Comments/Signature:						

## Friday, November 10, 2017 (A Day)

Period	Subject	Assignments	Due Date	Complete (X)	Teacher Comment	Teacher Initials
<b>A1</b>						
<b>A2</b>						
<b>A3</b>						
<b>A4</b>						
Parent Comments/Signature:						

## Monday, November 13, 2017 (B Day)

Period	Subject	Assignments	Due Date	Complete (X)	Teacher Comment	Teacher Initials
<b>B5</b>						
<b>B6</b>						
<b>B7</b>						
<b>B8</b>						
Parent Comments/Signature:						

## Tuesday, November 14, 2017 (A Day)

Period	Subject	Assignments	Due Date	Complete (X)	Teacher Comment	Teacher Initials
<b>A1</b>						
<b>A2</b>						
<b>A3</b>						
<b>A4</b>						
Parent Comments/Signature:						

## Wednesday, November 15, 2017 (B Day)

Period	Subject	Assignments	Due Date	Complete (X)	Teacher Comment	Teacher Initials
<b>B5</b>						
<b>B6</b>						
<b>B7</b>						
<b>B8</b>						
Parent Comments/Signature:						

## Thursday, November 16, 2017 (A Day)

Period	Subject	Assignments	Due Date	Complete (X)	Teacher Comment	Teacher Initials
<b>A1</b>						
<b>A2</b>						
<b>A3</b>						
<b>A4</b>						
Parent Comments/Signature:						

## Friday, November 17, 2017 (B Day)

Period	Subject	Assignments	Due Date	Complete (X)	Teacher Comment	Teacher Initials
<b>B5</b>						
<b>B6</b>						
<b>B7</b>						
<b>B8</b>						
Parent Comments/Signature:						



## Monday, November 20, 2017 (A Day)

Period	Subject	Assignments	Due Date	Complete (X)	Teacher Comment	Teacher Initials
<b>A1</b>						
<b>A2</b>						
<b>A3</b>						
<b>A4</b>						
Parent Comments/Signature:						

## Tuesday, November 21, 2017 (B Day)

Period	Subject	Assignments	Due Date	Complete (X)	Teacher Comment	Teacher Initials
<b>B5</b>						
<b>B6</b>						
<b>B7</b>						
<b>B8</b>						
Parent Comments/Signature:						

## Wednesday, November 22, 2017 Thanksgiving Break (No School)

Period	Subject	Assignments	Due Date	Complete (X)	Teacher Comment	Teacher Initials
Parent Comments/Signature:						

**Thursday, November 23, 2017 Thanksgiving Break (No School)**

Period	Subject	Assignments	Due Date	Complete (X)	Teacher Comment	Teacher Initials
Parent Comments/Signature:						

**Friday, November 24, 2017 Thanksgiving Break (No School)**

Period	Subject	Assignments	Due Date	Complete (X)	Teacher Comment	Teacher Initials
Parent Comments/Signature:						

---



---



---



---



---



---



---



---



---



---

## Monday, November 27, 2017 (A Day)

Period	Subject	Assignments	Due Date	Complete (X)	Teacher Comment	Teacher Initials
<b>A1</b>						
<b>A2</b>						
<b>A3</b>						
<b>A4</b>						
Parent Comments/Signature:						

## Tuesday, November 28, 2017 (B Day)

Period	Subject	Assignments	Due Date	Complete (X)	Teacher Comment	Teacher Initials
<b>B5</b>						
<b>B6</b>						
<b>B7</b>						
<b>B8</b>						
Parent Comments/Signature:						

## Wednesday, November 29, 2017 (A Day)

Period	Subject	Assignments	Due Date	Complete (X)	Teacher Comment	Teacher Initials
<b>A1</b>						
<b>A2</b>						
<b>A3</b>						
<b>A4</b>						
Parent Comments/Signature:						

## Thursday, November 30, 2017 (B Day)

Period	Subject	Assignments	Due Date	Complete (X)	Teacher Comment	Teacher Initials
<b>B5</b>						
<b>B6</b>						
<b>B7</b>						
<b>B8</b>						
Parent Comments/Signature:						

## Friday, December 1, 2017 (A Day)

Period	Subject	Assignments	Due Date	Complete (X)	Teacher Comment	Teacher Initials
<b>A1</b>						
<b>A2</b>						
<b>A3</b>						
<b>A4</b>						
Parent Comments/Signature:						

## Monday, December 4, 2017 (B Day)

Period	Subject	Assignments	Due Date	Complete (X)	Teacher Comment	Teacher Initials
<b>B5</b>						
<b>B6</b>						
<b>B7</b>						
<b>B8</b>						
Parent Comments/Signature:						

## Tuesday, December 5, 2017 (A Day)

Period	Subject	Assignments	Due Date	Complete (X)	Teacher Comment	Teacher Initials
<b>A1</b>						
<b>A2</b>						
<b>A3</b>						
<b>A4</b>						
Parent Comments/Signature:						

## Wednesday, December 6, 2017 (B Day)

Period	Subject	Assignments	Due Date	Complete (X)	Teacher Comment	Teacher Initials
<b>B5</b>						
<b>B6</b>						
<b>B7</b>						
<b>B8</b>						
Parent Comments/Signature:						

## Thursday, December 7, 2017 (A Day)

Period	Subject	Assignments	Due Date	Complete (X)	Teacher Comment	Teacher Initials
<b>A1</b>						
<b>A2</b>						
<b>A3</b>						
<b>A4</b>						
Parent Comments/Signature:						

## Friday, December 8, 2017 (B Day)

Period	Subject	Assignments	Due Date	Complete (X)	Teacher Comment	Teacher Initials
<b>B5</b>						
<b>B6</b>						
<b>B7</b>						
<b>B8</b>						
Parent Comments/Signature:						

## Monday, December 11, 2017 (A Day)

Period	Subject	Assignments	Due Date	Complete (X)	Teacher Comment	Teacher Initials
<b>A1</b>						
<b>A2</b>						
<b>A3</b>						
<b>A4</b>						
Parent Comments/Signature:						

## Tuesday, December 12, 2017 (B Day)

Period	Subject	Assignments	Due Date	Complete (X)	Teacher Comment	Teacher Initials
<b>B5</b>						
<b>B6</b>						
<b>B7</b>						
<b>B8</b>						
Parent Comments/Signature:						

## Wednesday, December 13, 2017 (A Day)

Period	Subject	Assignments	Due Date	Complete (X)	Teacher Comment	Teacher Initials
<b>A1</b>						
<b>A2</b>						
<b>A3</b>						
<b>A4</b>						
Parent Comments/Signature:						

## Thursday, December 14, 2017 (B Day)

Period	Subject	Assignments	Due Date	Complete (X)	Teacher Comment	Teacher Initials
<b>B5</b>						
<b>B6</b>						
<b>B7</b>						
<b>B8</b>						
Parent Comments/Signature:						

## Friday, December 15, 2017 (A Day)

Period	Subject	Assignments	Due Date	Complete (X)	Teacher Comment	Teacher Initials
<b>A1</b>						
<b>A2</b>						
<b>A3</b>						
<b>A4</b>						
Parent Comments/Signature:						



## Monday, December 18, 2017 (B Day)

Period	Subject	Assignments	Due Date	Complete (X)	Teacher Comment	Teacher Initials
<b>B5</b>						
<b>B6</b>						
<b>B7</b>						
<b>B8</b>						
Parent Comments/Signature:						

## Tuesday, December 19, 2017 (A Day)

Period	Subject	Assignments	Due Date	Complete (X)	Teacher Comment	Teacher Initials
<b>A1</b>						
<b>A2</b>						
<b>A3</b>						
<b>A4</b>						
Parent Comments/Signature:						

## Wednesday, December 20, 2017 (B Day) Term 2 Ends

Period	Subject	Assignments	Due Date	Complete (X)	Teacher Comment	Teacher Initials
<b>B5</b>						
<b>B6</b>						
<b>B7</b>						
<b>B8</b>						
Parent Comments/Signature:						

Christmas break will be Thursday December 21<sup>st</sup> through Tuesday January 2<sup>nd</sup>.

**Wednesday, January 3, 2018 (A Day) Semester 2 Begins**

Period	Subject	Assignments	Due Date	Complete (X)	Teacher Comment	Teacher Initials
A1						
A2						
A3						
A4						
Parent Comments/Signature:						

**Thursday, January 4, 2018 (B Day)**

Period	Subject	Assignments	Due Date	Complete (X)	Teacher Comment	Teacher Initials
B5						
B6						
B7						
B8						
Parent Comments/Signature:						

**Friday, January 5, 2018 (A Day)**

Period	Subject	Assignments	Due Date	Complete (X)	Teacher Comment	Teacher Initials
A1						
A2						
A3						
A4						
Parent Comments/Signature:						

## Monday, January 8, 2018 (B Day)

Period	Subject	Assignments	Due Date	Complete (X)	Teacher Comment	Teacher Initials
<b>B5</b>						
<b>B6</b>						
<b>B7</b>						
<b>B8</b>						
Parent Comments/Signature:						

## Tuesday, January 9, 2018 (A Day)

Period	Subject	Assignments	Due Date	Complete (X)	Teacher Comment	Teacher Initials
<b>A1</b>						
<b>A2</b>						
<b>A3</b>						
<b>A4</b>						
Parent Comments/Signature:						

## Wednesday, January 10, 2018 (B Day)

Period	Subject	Assignments	Due Date	Complete (X)	Teacher Comment	Teacher Initials
<b>B5</b>						
<b>B6</b>						
<b>B7</b>						
<b>B8</b>						
Parent Comments/Signature:						

## Thursday, January 11, 2018 (A Day)

Period	Subject	Assignments	Due Date	Complete (X)	Teacher Comment	Teacher Initials
<b>A1</b>						
<b>A2</b>						
<b>A3</b>						
<b>A4</b>						
Parent Comments/Signature:						

## Friday, January 12, 2018 (B Day)

Period	Subject	Assignments	Due Date	Complete (X)	Teacher Comment	Teacher Initials
<b>B5</b>						
<b>B6</b>						
<b>B7</b>						
<b>B8</b>						
Parent Comments/Signature:						

**Monday, January 15, 2018 Martin Luther King Day (No School)**

Period	Subject	Assignments	Due Date	Complete (X)	Teacher Comment	Teacher Initials
Parent Comments/Signature:						

**Tuesday, January 16, 2018 (A Day)**

Period	Subject	Assignments	Due Date	Complete (X)	Teacher Comment	Teacher Initials
<b>A1</b>						
<b>A2</b>						
<b>A3</b>						
<b>A4</b>						
Parent Comments/Signature:						

**Wednesday, January 17, 2018 (B Day)**

Period	Subject	Assignments	Due Date	Complete (X)	Teacher Comment	Teacher Initials
<b>B5</b>						
<b>B6</b>						
<b>B7</b>						
<b>B8</b>						
Parent Comments/Signature:						

## Thursday, January 18, 2018 (A Day)

Period	Subject	Assignments	Due Date	Complete (X)	Teacher Comment	Teacher Initials
<b>A1</b>						
<b>A2</b>						
<b>A3</b>						
<b>A4</b>						
Parent Comments/Signature:						

## Friday, January 19, 2018 (B Day)

Period	Subject	Assignments	Due Date	Complete (X)	Teacher Comment	Teacher Initials
<b>B5</b>						
<b>B6</b>						
<b>B7</b>						
<b>B8</b>						
Parent Comments/Signature:						

---

---

---

---

---

---

---

---

---

---

---

---

## Monday, January 22, 2018 (A Day)

Period	Subject	Assignments	Due Date	Complete (X)	Teacher Comment	Teacher Initials
<b>A1</b>						
<b>A2</b>						
<b>A3</b>						
<b>A4</b>						
Parent Comments/Signature:						

## Tuesday, January 23, 2018 (B Day)

Period	Subject	Assignments	Due Date	Complete (X)	Teacher Comment	Teacher Initials
<b>B5</b>						
<b>B6</b>						
<b>B7</b>						
<b>B8</b>						
Parent Comments/Signature:						

## Wednesday, January 24, 2018 (A Day)

Period	Subject	Assignments	Due Date	Complete (X)	Teacher Comment	Teacher Initials
<b>A1</b>						
<b>A2</b>						
<b>A3</b>						
<b>A4</b>						
Parent Comments/Signature:						

## Thursday, January 25, 2018 (B Day)

Period	Subject	Assignments	Due Date	Complete (X)	Teacher Comment	Teacher Initials
<b>B5</b>						
<b>B6</b>						
<b>B7</b>						
<b>B8</b>						
Parent Comments/Signature:						

## Friday, January 26, 2018 (A Day)

Period	Subject	Assignments	Due Date	Complete (X)	Teacher Comment	Teacher Initials
<b>A1</b>						
<b>A2</b>						
<b>A3</b>						
<b>A4</b>						
Parent Comments/Signature:						



## Monday, January 29, 2018 (B Day)

Period	Subject	Assignments	Due Date	Complete (X)	Teacher Comment	Teacher Initials
<b>B5</b>						
<b>B6</b>						
<b>B7</b>						
<b>B8</b>						
Parent Comments/Signature:						

## Tuesday, January 30, 2018 (A Day)

Period	Subject	Assignments	Due Date	Complete (X)	Teacher Comment	Teacher Initials
<b>A1</b>						
<b>A2</b>						
<b>A3</b>						
<b>A4</b>						
Parent Comments/Signature:						

## Wednesday, January 31, 2018 (B Day)

Period	Subject	Assignments	Due Date	Complete (X)	Teacher Comment	Teacher Initials
<b>B5</b>						
<b>B6</b>						
<b>B7</b>						
<b>B8</b>						
Parent Comments/Signature:						

## Thursday, February 1, 2018 (A Day)

Period	Subject	Assignments	Due Date	Complete (X)	Teacher Comment	Teacher Initials
<b>A1</b>						
<b>A2</b>						
<b>A3</b>						
<b>A4</b>						
Parent Comments/Signature:						

## Friday, February 2, 2018 (B Day)

Period	Subject	Assignments	Due Date	Complete (X)	Teacher Comment	Teacher Initials
<b>B5</b>						
<b>B6</b>						
<b>B7</b>						
<b>B8</b>						
Parent Comments/Signature:						

## Monday, February 5, 2018 (A Day)

Period	Subject	Assignments	Due Date	Complete (X)	Teacher Comment	Teacher Initials
<b>A1</b>						
<b>A2</b>						
<b>A3</b>						
<b>A4</b>						
Parent Comments/Signature:						

## Tuesday, February 6, 2018 (B Day)

Period	Subject	Assignments	Due Date	Complete (X)	Teacher Comment	Teacher Initials
<b>B5</b>						
<b>B6</b>						
<b>B7</b>						
<b>B8</b>						
Parent Comments/Signature:						

## Wednesday, February 7, 2018 (A Day)

Period	Subject	Assignments	Due Date	Complete (X)	Teacher Comment	Teacher Initials
<b>A1</b>						
<b>A2</b>						
<b>A3</b>						
<b>A4</b>						
Parent Comments/Signature:						

## Thursday, February 8, 2018 (B Day)

Period	Subject	Assignments	Due Date	Complete (X)	Teacher Comment	Teacher Initials
<b>B5</b>						
<b>B6</b>						
<b>B7</b>						
<b>B8</b>						
Parent Comments/Signature:						

## Friday, February 9, 2018 (A Day)

Period	Subject	Assignments	Due Date	Complete (X)	Teacher Comment	Teacher Initials
<b>A1</b>						
<b>A2</b>						
<b>A3</b>						
<b>A4</b>						
Parent Comments/Signature:						

## Monday, February 12, 2018 (B Day)

Period	Subject	Assignments	Due Date	Complete (X)	Teacher Comment	Teacher Initials
<b>B5</b>						
<b>B6</b>						
<b>B7</b>						
<b>B8</b>						
Parent Comments/Signature:						

## Tuesday, February 13, 2018 (A Day)

Period	Subject	Assignments	Due Date	Complete (X)	Teacher Comment	Teacher Initials
<b>A1</b>						
<b>A2</b>						
<b>A3</b>						
<b>A4</b>						
Parent Comments/Signature:						

## Wednesday, February 14, 2018 (B Day)

Period	Subject	Assignments	Due Date	Complete (X)	Teacher Comment	Teacher Initials
<b>B5</b>						
<b>B6</b>						
<b>B7</b>						
<b>B8</b>						
Parent Comments/Signature:						

## Thursday, February 15, 2018 (A Day)

Period	Subject	Assignments	Due Date	Complete (X)	Teacher Comment	Teacher Initials
<b>A1</b>						
<b>A2</b>						
<b>A3</b>						
<b>A4</b>						
Parent Comments/Signature:						

## Friday, February 16, 2018 (B Day)

Period	Subject	Assignments	Due Date	Complete (X)	Teacher Comment	Teacher Initials
<b>B5</b>						
<b>B6</b>						
<b>B7</b>						
<b>B8</b>						
Parent Comments/Signature:						

**Monday, February 19, 2018 Washington-Lincoln Day (No School)**

Period	Subject	Assignments	Due Date	Complete (X)	Teacher Comment	Teacher Initials
Parent Comments/Signature:						

**Tuesday, February 20, 2018 (A Day)**

Period	Subject	Assignments	Due Date	Complete (X)	Teacher Comment	Teacher Initials
<b>A1</b>						
<b>A2</b>						
<b>A3</b>						
<b>A4</b>						
Parent Comments/Signature:						

**Wednesday, February 21, 2018 (B Day)**

Period	Subject	Assignments	Due Date	Complete (X)	Teacher Comment	Teacher Initials
<b>B5</b>						
<b>B6</b>						
<b>B7</b>						
<b>B8</b>						
Parent Comments/Signature:						

## Thursday, February 22, 2018 (A Day)

Period	Subject	Assignments	Due Date	Complete (X)	Teacher Comment	Teacher Initials
<b>A1</b>						
<b>A2</b>						
<b>A3</b>						
<b>A4</b>						
Parent Comments/Signature:						

## Friday, February 23, 2018 (B Day)

Period	Subject	Assignments	Due Date	Complete (X)	Teacher Comment	Teacher Initials
<b>B5</b>						
<b>B6</b>						
<b>B7</b>						
<b>B8</b>						
Parent Comments/Signature:						



## Monday, February 26, 2018 (A Day)

Period	Subject	Assignments	Due Date	Complete (X)	Teacher Comment	Teacher Initials
<b>A1</b>						
<b>A2</b>						
<b>A3</b>						
<b>A4</b>						
Parent Comments/Signature:						

## Tuesday, February 27, 2018 (A/B Day)

Period	Subject	Assignments	Due Date	Complete (X)	Teacher Comment	Teacher Initials
<b>A1/B</b> <small>5</small>						
<b>A2/B</b> <small>6</small>						
<b>A3/B</b> <small>7</small>						
<b>A4/B</b> <small>8</small>						
Parent Comments/Signature:						

## Wednesday, February 28, 2018 (B Day)

Period	Subject	Assignments	Due Date	Complete (X)	Teacher Comment	Teacher Initials
<b>B5</b>						
<b>B6</b>						
<b>B7</b>						
<b>B8</b>						
Parent Comments/Signature:						

## Thursday, March 1, 2018 (A Day)

Period	Subject	Assignments	Due Date	Complete (X)	Teacher Comment	Teacher Initials
<b>A1</b>						
<b>A2</b>						
<b>A3</b>						
<b>A4</b>						
Parent Comments/Signature:						

## Friday, March 2, 2018 (B Day)

Period	Subject	Assignments	Due Date	Complete (X)	Teacher Comment	Teacher Initials
<b>B5</b>						
<b>B6</b>						
<b>B7</b>						
<b>B8</b>						
Parent Comments/Signature:						

**Monday, March 5, 2018 Professional Development (No School)**

Period	Subject	Assignments	Due Date	Complete (X)	Teacher Comment	Teacher Initials
Parent Comments/Signature:						

**Tuesday, March 6, 2018 (A Day)**

Period	Subject	Assignments	Due Date	Complete (X)	Teacher Comment	Teacher Initials
<b>A1</b>						
<b>A2</b>						
<b>A3</b>						
<b>A4</b>						
Parent Comments/Signature:						

**Wednesday, March 7, 2018 (B Day)**

Period	Subject	Assignments	Due Date	Complete (X)	Teacher Comment	Teacher Initials
<b>B5</b>						
<b>B6</b>						
<b>B7</b>						
<b>B8</b>						
Parent Comments/Signature:						

## Thursday, March 8, 2018 (A Day)

Period	Subject	Assignments	Due Date	Complete (X)	Teacher Comment	Teacher Initials
<b>A1</b>						
<b>A2</b>						
<b>A3</b>						
<b>A4</b>						
Parent Comments/Signature:						

## Friday, March 9, 2018 (B Day) End of Term 3

Period	Subject	Assignments	Due Date	Complete (X)	Teacher Comment	Teacher Initials
<b>B5</b>						
<b>B6</b>						
<b>B7</b>						
<b>B8</b>						
Parent Comments/Signature:						

## Monday, March 12, 2018 (A Day) Start of Term 4

Period	Subject	Assignments	Due Date	Complete (X)	Teacher Comment	Teacher Initials
<b>A1</b>						
<b>A2</b>						
<b>A3</b>						
<b>A4</b>						
Parent Comments/Signature:						

## Tuesday, March 13, 2018 (B Day)

Period	Subject	Assignments	Due Date	Complete (X)	Teacher Comment	Teacher Initials
<b>B5</b>						
<b>B6</b>						
<b>B7</b>						
<b>B8</b>						
Parent Comments/Signature:						

## Wednesday, March 14, 2018 (A Day)

Period	Subject	Assignments	Due Date	Complete (X)	Teacher Comment	Teacher Initials
<b>A1</b>						
<b>A2</b>						
<b>A3</b>						
<b>A4</b>						
Parent Comments/Signature:						

## Thursday, March 15, 2018 (B Day)

Period	Subject	Assignments	Due Date	Complete (X)	Teacher Comment	Teacher Initials
<b>B5</b>						
<b>B6</b>						
<b>B7</b>						
<b>B8</b>						
Parent Comments/Signature:						

## Friday, March 16, 2018 (A Day)

Period	Subject	Assignments	Due Date	Complete (X)	Teacher Comment	Teacher Initials
<b>A1</b>						
<b>A2</b>						
<b>A3</b>						
<b>A4</b>						
Parent Comments/Signature:						

## Monday, March 19, 2018 (B Day)

Period	Subject	Assignments	Due Date	Complete (X)	Teacher Comment	Teacher Initials
<b>B5</b>						
<b>B6</b>						
<b>B7</b>						
<b>B8</b>						
Parent Comments/Signature:						

## Tuesday, March 20, 2018 (A Day)

Period	Subject	Assignments	Due Date	Complete (X)	Teacher Comment	Teacher Initials
<b>A1</b>						
<b>A2</b>						
<b>A3</b>						
<b>A4</b>						
Parent Comments/Signature:						

## Wednesday, March 21, 2018 (B Day)

Period	Subject	Assignments	Due Date	Complete (X)	Teacher Comment	Teacher Initials
<b>B5</b>						
<b>B6</b>						
<b>B7</b>						
<b>B8</b>						
Parent Comments/Signature:						

## Thursday, March 22, 2018 (A Day)

Period	Subject	Assignments	Due Date	Complete (X)	Teacher Comment	Teacher Initials
<b>A1</b>						
<b>A2</b>						
<b>A3</b>						
<b>A4</b>						
Parent Comments/Signature:						

## Friday, March 23, 2018 (B Day)

Period	Subject	Assignments	Due Date	Complete (X)	Teacher Comment	Teacher Initials
<b>B5</b>						
<b>B6</b>						
<b>B7</b>						
<b>B8</b>						
Parent Comments/Signature:						



## Monday, March 26, 2018 (A Day)

Period	Subject	Assignments	Due Date	Complete (X)	Teacher Comment	Teacher Initials
<b>A1</b>						
<b>A2</b>						
<b>A3</b>						
<b>A4</b>						
Parent Comments/Signature:						

## Tuesday, March 27, 2018 (B Day)

Period	Subject	Assignments	Due Date	Complete (X)	Teacher Comment	Teacher Initials
<b>B5</b>						
<b>B6</b>						
<b>B7</b>						
<b>B8</b>						
Parent Comments/Signature:						

## Wednesday, March 28, 2018 (A Day)

Period	Subject	Assignments	Due Date	Complete (X)	Teacher Comment	Teacher Initials
<b>A1</b>						
<b>A2</b>						
<b>A3</b>						
<b>A4</b>						
Parent Comments/Signature:						

## Thursday, March 29, 2018 (B Day)

Period	Subject	Assignments	Due Date	Complete (X)	Teacher Comment	Teacher Initials
<b>B5</b>						
<b>B6</b>						
<b>B7</b>						
<b>B8</b>						
Parent Comments/Signature:						

## Friday, March 30, 2018 (A Day)

Period	Subject	Assignments	Due Date	Complete (X)	Teacher Comment	Teacher Initials
<b>A1</b>						
<b>A2</b>						
<b>A3</b>						
<b>A4</b>						
Parent Comments/Signature:						

## Spring Break No School April 2-April 6

### Monday, April 9, 2018 (B Day)

Period	Subject	Assignments	Due Date	Complete (X)	Teacher Comment	Teacher Initials
<b>B5</b>						
<b>B6</b>						
<b>B7</b>						
<b>B8</b>						
Parent Comments/Signature:						

### Tuesday, April 10, 2018 (A Day)

Period	Subject	Assignments	Due Date	Complete (X)	Teacher Comment	Teacher Initials
<b>A1</b>						
<b>A2</b>						
<b>A3</b>						
<b>A4</b>						
Parent Comments/Signature:						

### Wednesday, April 11, 2018 (B Day)

Period	Subject	Assignments	Due Date	Complete (X)	Teacher Comment	Teacher Initials
<b>B5</b>						
<b>B6</b>						
<b>B7</b>						
<b>B8</b>						
Parent Comments/Signature:						

## Thursday, April 12, 2018 (A Day)

Period	Subject	Assignments	Due Date	Complete (X)	Teacher Comment	Teacher Initials
<b>A1</b>						
<b>A2</b>						
<b>A3</b>						
<b>A4</b>						
Parent Comments/Signature:						

## Friday, April 13, 2018 (B Day)

Period	Subject	Assignments	Due Date	Complete (X)	Teacher Comment	Teacher Initials
<b>B5</b>						
<b>B6</b>						
<b>B7</b>						
<b>B8</b>						
Parent Comments/Signature:						

## Monday, April 16, 2018 (A Day)

Period	Subject	Assignments	Due Date	Complete (X)	Teacher Comment	Teacher Initials
<b>A1</b>						
<b>A2</b>						
<b>A3</b>						
<b>A4</b>						
Parent Comments/Signature:						

## Tuesday, April 17, 2018 (B Day)

Period	Subject	Assignments	Due Date	Complete (X)	Teacher Comment	Teacher Initials
<b>B5</b>						
<b>B6</b>						
<b>B7</b>						
<b>B8</b>						
Parent Comments/Signature:						

## Wednesday, April 18, 2018 (A Day)

Period	Subject	Assignments	Due Date	Complete (X)	Teacher Comment	Teacher Initials
<b>A1</b>						
<b>A2</b>						
<b>A3</b>						
<b>A4</b>						
Parent Comments/Signature:						

## Thursday, April 19, 2018 (B Day)

Period	Subject	Assignments	Due Date	Complete (X)	Teacher Comment	Teacher Initials
<b>B5</b>						
<b>B6</b>						
<b>B7</b>						
<b>B8</b>						
Parent Comments/Signature:						

## Friday, April 20, 2018 (A Day)

Period	Subject	Assignments	Due Date	Complete (X)	Teacher Comment	Teacher Initials
<b>A1</b>						
<b>A2</b>						
<b>A3</b>						
<b>A4</b>						
Parent Comments/Signature:						

## Monday, April 23, 2018 (B Day)

Period	Subject	Assignments	Due Date	Complete (X)	Teacher Comment	Teacher Initials
<b>B5</b>						
<b>B6</b>						
<b>B7</b>						
<b>B8</b>						
Parent Comments/Signature:						

## Tuesday, April 24, 2018 (A Day)

Period	Subject	Assignments	Due Date	Complete (X)	Teacher Comment	Teacher Initials
<b>A1</b>						
<b>A2</b>						
<b>A3</b>						
<b>A4</b>						
Parent Comments/Signature:						

## Wednesday, April 25, 2018 (B Day)

Period	Subject	Assignments	Due Date	Complete (X)	Teacher Comment	Teacher Initials
<b>B5</b>						
<b>B6</b>						
<b>B7</b>						
<b>B8</b>						
Parent Comments/Signature:						

## Thursday, April 26, 2018 (A Day)

Period	Subject	Assignments	Due Date	Complete (X)	Teacher Comment	Teacher Initials
<b>A1</b>						
<b>A2</b>						
<b>A3</b>						
<b>A4</b>						
Parent Comments/Signature:						

## Friday, April 27, 2018 (B Day)

Period	Subject	Assignments	Due Date	Complete (X)	Teacher Comment	Teacher Initials
<b>B5</b>						
<b>B6</b>						
<b>B7</b>						
<b>B8</b>						
Parent Comments/Signature:						



## Monday, April 30, 2018 (A Day)

Period	Subject	Assignments	Due Date	Complete (X)	Teacher Comment	Teacher Initials
<b>A1</b>						
<b>A2</b>						
<b>A3</b>						
<b>A4</b>						
Parent Comments/Signature:						

## Tuesday, May 1, 2018 (B Day)

Period	Subject	Assignments	Due Date	Complete (X)	Teacher Comment	Teacher Initials
<b>B5</b>						
<b>B6</b>						
<b>B7</b>						
<b>B8</b>						
Parent Comments/Signature:						

## Wednesday, May 2, 2018 (A Day)

Period	Subject	Assignments	Due Date	Complete (X)	Teacher Comment	Teacher Initials
<b>A1</b>						
<b>A2</b>						
<b>A3</b>						
<b>A4</b>						
Parent Comments/Signature:						

## Thursday, May 3, 2018 (B Day)

Period	Subject	Assignments	Due Date	Complete (X)	Teacher Comment	Teacher Initials
<b>B5</b>						
<b>B6</b>						
<b>B7</b>						
<b>B8</b>						
Parent Comments/Signature:						

## Friday, May 4, 2018 (A Day)

Period	Subject	Assignments	Due Date	Complete (X)	Teacher Comment	Teacher Initials
<b>A1</b>						
<b>A2</b>						
<b>A3</b>						
<b>A4</b>						
Parent Comments/Signature:						

## Monday, May 7, 2018 (B Day)

Period	Subject	Assignments	Due Date	Complete (X)	Teacher Comment	Teacher Initials
<b>B5</b>						
<b>B6</b>						
<b>B7</b>						
<b>B8</b>						
Parent Comments/Signature:						

## Tuesday, May 8, 2018 (A Day)

Period	Subject	Assignments	Due Date	Complete (X)	Teacher Comment	Teacher Initials
<b>A1</b>						
<b>A2</b>						
<b>A3</b>						
<b>A4</b>						
Parent Comments/Signature:						

## Wednesday, May 9, 2018 (B Day)

Period	Subject	Assignments	Due Date	Complete (X)	Teacher Comment	Teacher Initials
<b>B5</b>						
<b>B6</b>						
<b>B7</b>						
<b>B8</b>						
Parent Comments/Signature:						

## Thursday, May 10, 2018 (A Day)

Period	Subject	Assignments	Due Date	Complete (X)	Teacher Comment	Teacher Initials
<b>A1</b>						
<b>A2</b>						
<b>A3</b>						
<b>A4</b>						
Parent Comments/Signature:						

## Friday, May 11, 2018 (B Day)

Period	Subject	Assignments	Due Date	Complete (X)	Teacher Comment	Teacher Initials
<b>B5</b>						
<b>B6</b>						
<b>B7</b>						
<b>B8</b>						
Parent Comments/Signature:						

## Monday, May 14, 2018 (A Day)

Period	Subject	Assignments	Due Date	Complete (X)	Teacher Comment	Teacher Initials
<b>A1</b>						
<b>A2</b>						
<b>A3</b>						
<b>A4</b>						
Parent Comments/Signature:						

## Tuesday, May 15, 2018 (B Day)

Period	Subject	Assignments	Due Date	Complete (X)	Teacher Comment	Teacher Initials
<b>B5</b>						
<b>B6</b>						
<b>B7</b>						
<b>B8</b>						
Parent Comments/Signature:						

## Wednesday, May 16, 2018 (A Day)

Period	Subject	Assignments	Due Date	Complete (X)	Teacher Comment	Teacher Initials
<b>A1</b>						
<b>A2</b>						
<b>A3</b>						
<b>A4</b>						
Parent Comments/Signature:						

## Thursday, May 17, 2018 (B Day)

Period	Subject	Assignments	Due Date	Complete (X)	Teacher Comment	Teacher Initials
<b>B5</b>						
<b>B6</b>						
<b>B7</b>						
<b>B8</b>						
Parent Comments/Signature:						

## Friday, May 18, 2018 (A Day)

Period	Subject	Assignments	Due Date	Complete (X)	Teacher Comment	Teacher Initials
<b>A1</b>						
<b>A2</b>						
<b>A3</b>						
<b>A4</b>						
Parent Comments/Signature:						

## Monday, May 21, 2018 (B Day)

Period	Subject	Assignments	Due Date	Complete (X)	Teacher Comment	Teacher Initials
<b>B5</b>						
<b>B6</b>						
<b>B7</b>						
<b>B8</b>						
Parent Comments/Signature:						

## Tuesday, May 22, 2018 (A Day)

Period	Subject	Assignments	Due Date	Complete (X)	Teacher Comment	Teacher Initials
<b>A1</b>						
<b>A2</b>						
<b>A3</b>						
<b>A4</b>						
Parent Comments/Signature:						

## Wednesday, May 23, 2018 (B Day)

Period	Subject	Assignments	Due Date	Complete (X)	Teacher Comment	Teacher Initials
<b>B5</b>						
<b>B6</b>						
<b>B7</b>						
<b>B8</b>						
Parent Comments/Signature:						

## Thursday, May 24, 2018 (A Day)

Period	Subject	Assignments	Due Date	Complete (X)	Teacher Comment	Teacher Initials
<b>A1</b>						
<b>A2</b>						
<b>A3</b>						
<b>A4</b>						
Parent Comments/Signature:						

## Friday, May 25, 2018 (B Day)

Period	Subject	Assignments	Due Date	Complete (X)	Teacher Comment	Teacher Initials
<b>B5</b>						
<b>B6</b>						
<b>B7</b>						
<b>B8</b>						
Parent Comments/Signature:						



## Monday, May 28, 2018 Memorial Day (No School)

Period	Subject	Assignments	Due Date	Complete (X)	Teacher Comment	Teacher Initials
Parent Comments/Signature:						

## Tuesday, May 29, 2018 (A Day)

Period	Subject	Assignments	Due Date	Complete (X)	Teacher Comment	Teacher Initials
<b>A1</b>						
<b>A2</b>						
<b>A3</b>						
<b>A4</b>						
Parent Comments/Signature:						

## Wednesday, May 30, 2018 (B Day)

Period	Subject	Assignments	Due Date	Complete (X)	Teacher Comment	Teacher Initials
<b>B5</b>						
<b>B6</b>						
<b>B7</b>						
<b>B8</b>						
Parent Comments/Signature:						

